



ASBV



VALVES FOR HIGHEST REQUIREMENTS

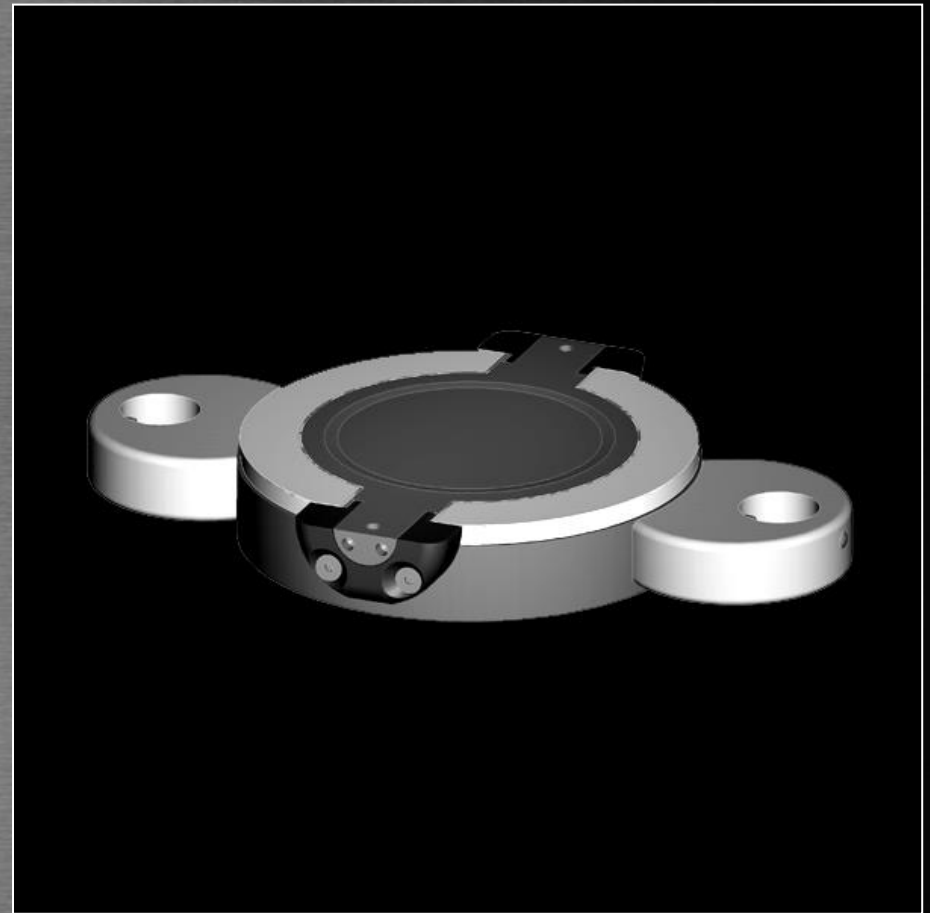
VARIETY OF ASBV

- ▶ *ASBV – Andocksysteme Containment Split Butterfly Valve*



ONE VALVE - ONE SYSTEM - *ASBV*

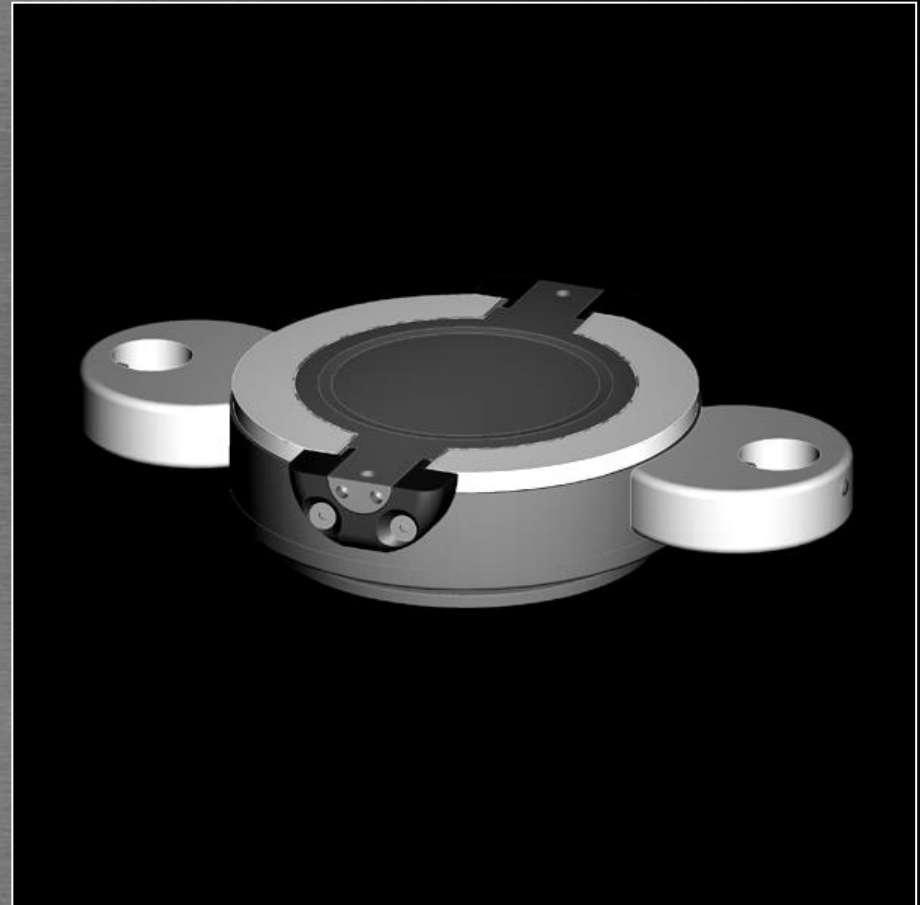
- ▶ *ASBV passive valve direct bolt*



ONE VALVE - ONE SYSTEM - *ASBV*

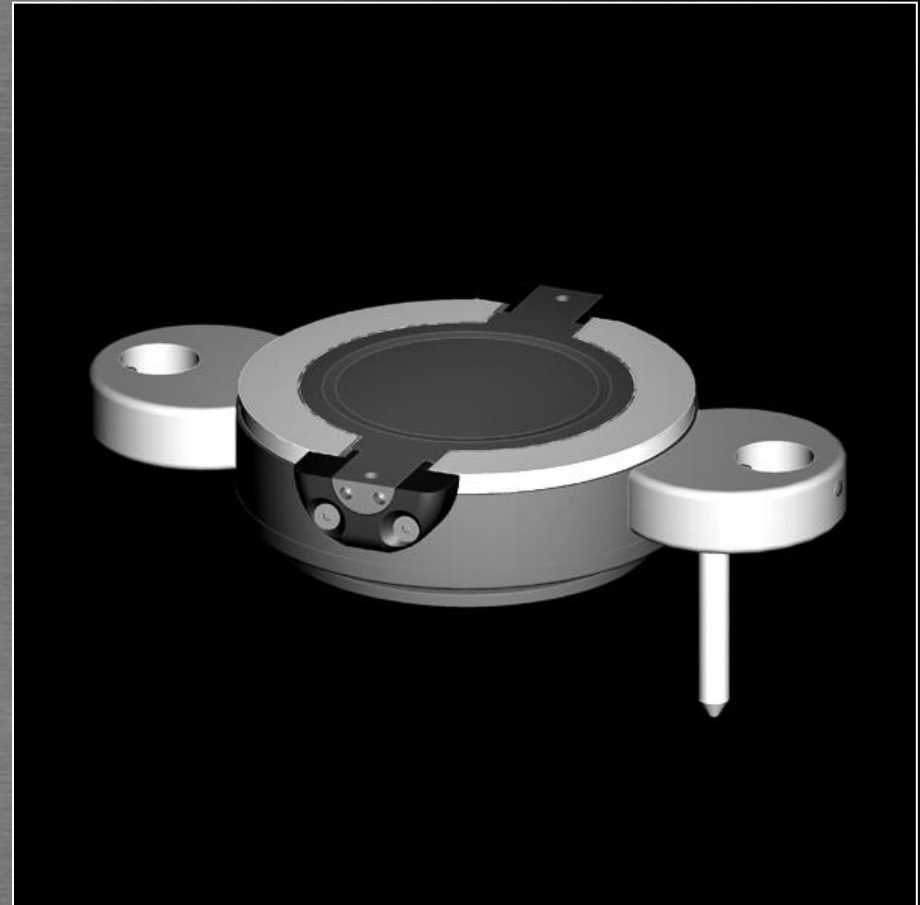
- ▶ *ASBV passive valve with tri-clamp.*

e.g. IBC



ONE VALVE - ONE SYSTEM - *ASBV*

- ▶ *ASBV*
*passive valve with
tri-clamp and locating
pin for automatic
applications*



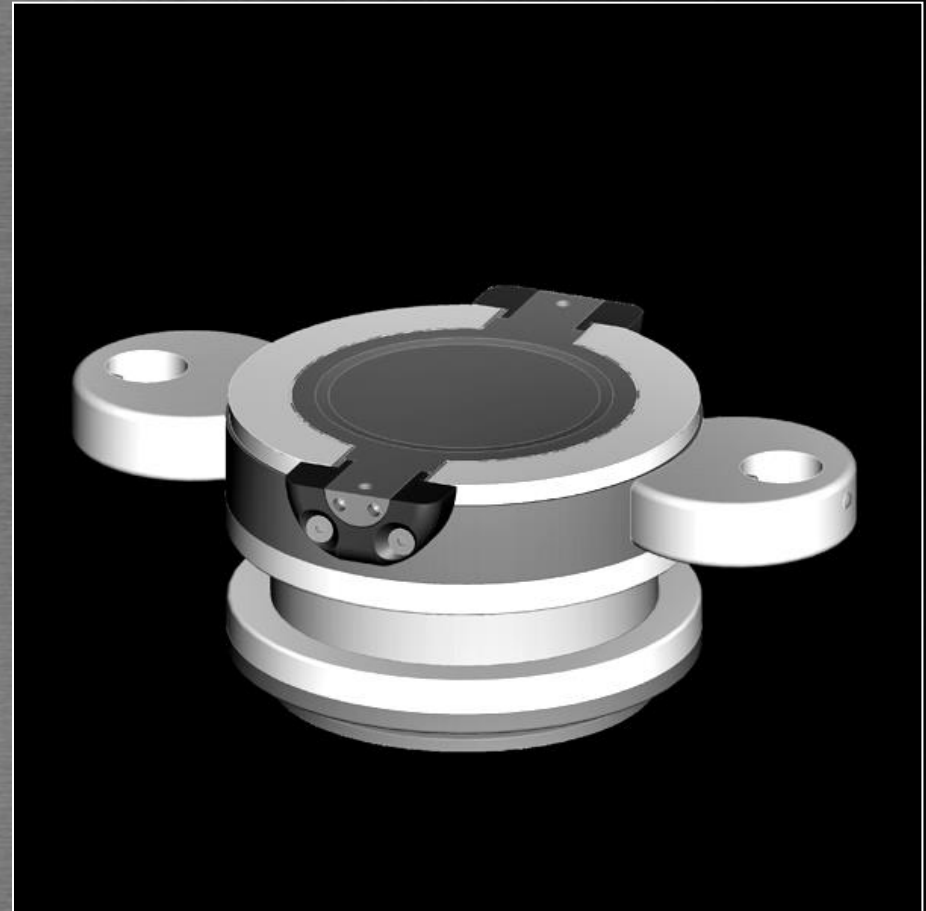
ONE VALVE - ONE SYSTEM - *ASBV*

- ▶ *ASBV*
*passive valve with
DIN or ANSI flange.*



ONE VALVE - ONE SYSTEM - *ASBV*

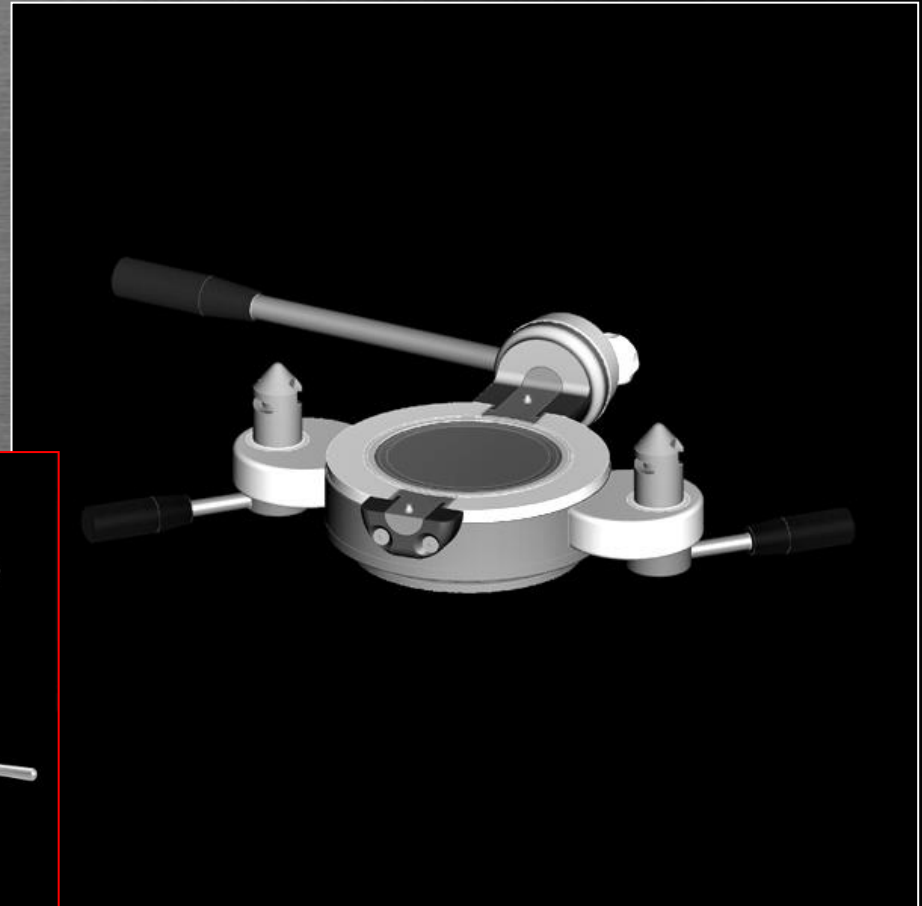
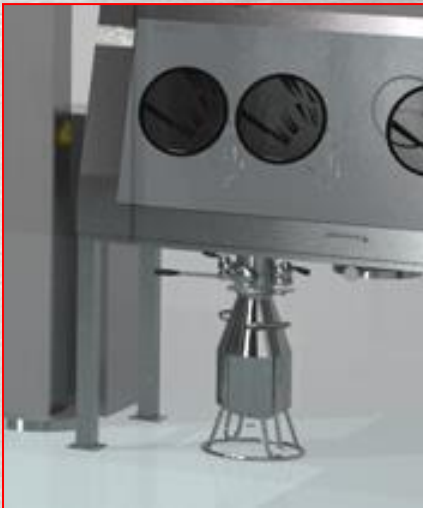
- ▶ *ASBV*
*passive valve with
flanges and short
compensator.*



ONE VALVE - ONE SYSTEM - *ASBV*

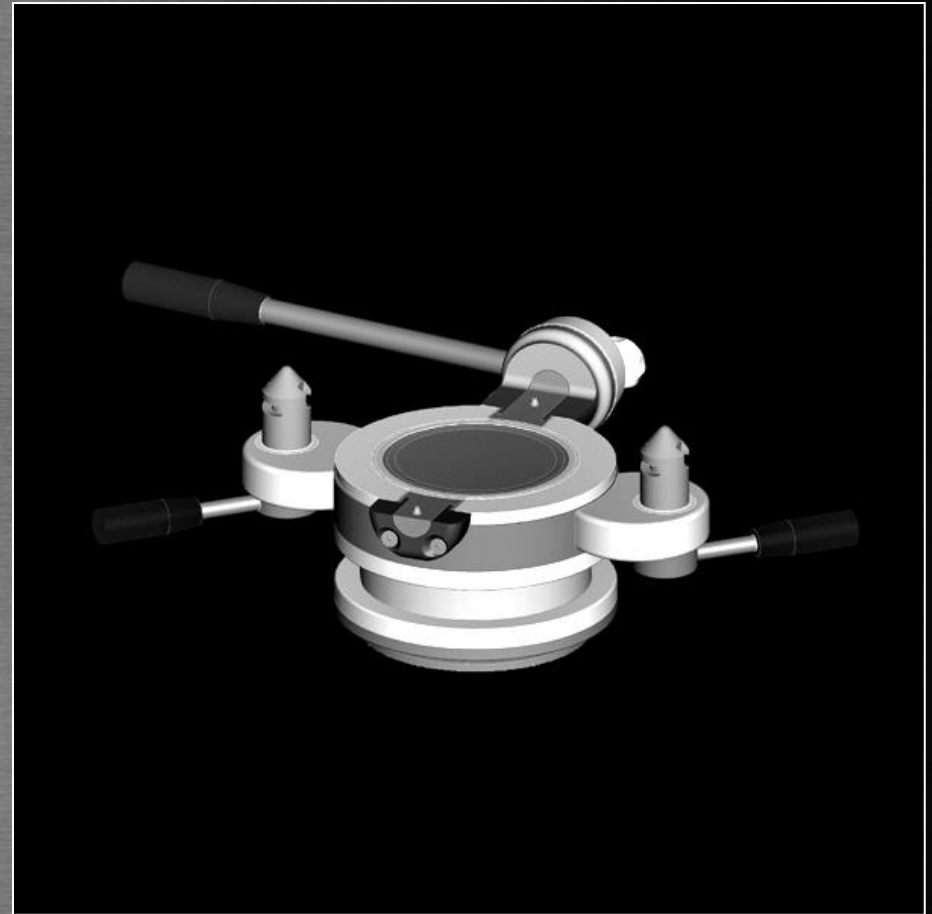
- ▶ *ASBV active valve
manual operation and
optional tri-clamp.*

e.g. isolator application



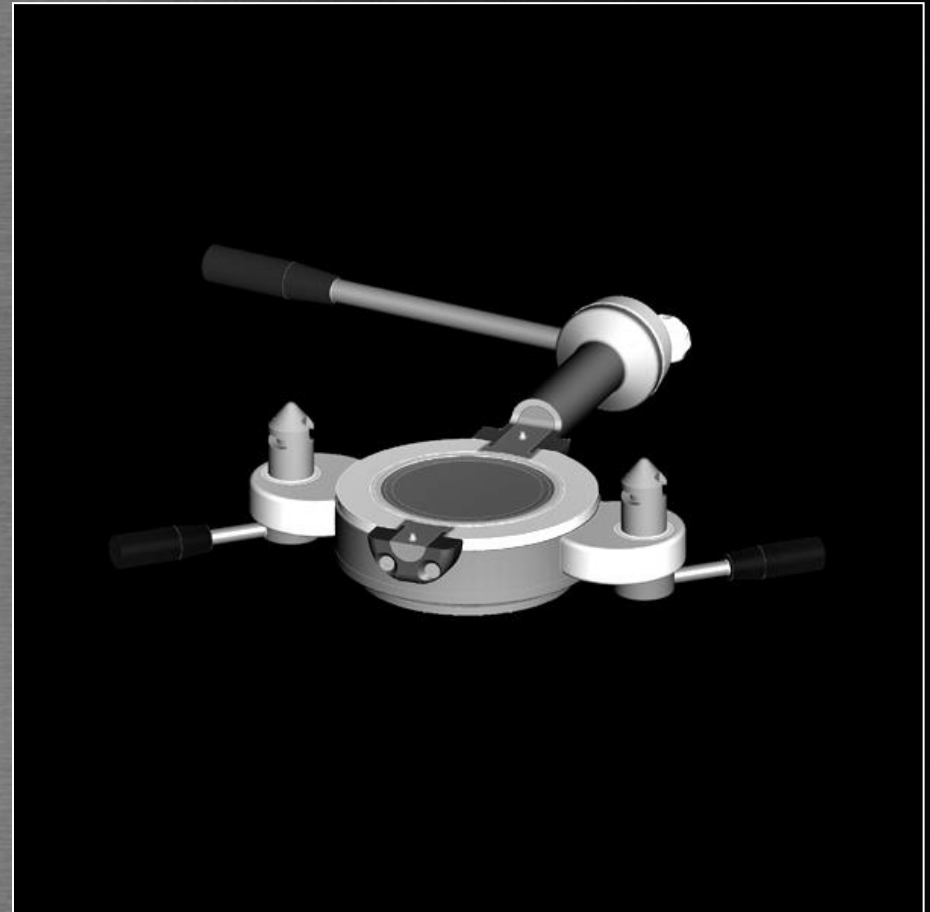
ONE VALVE - ONE SYSTEM - *ASBV*

- ▶ *ASBV active valve manual operation and short compensator with and flanges.*



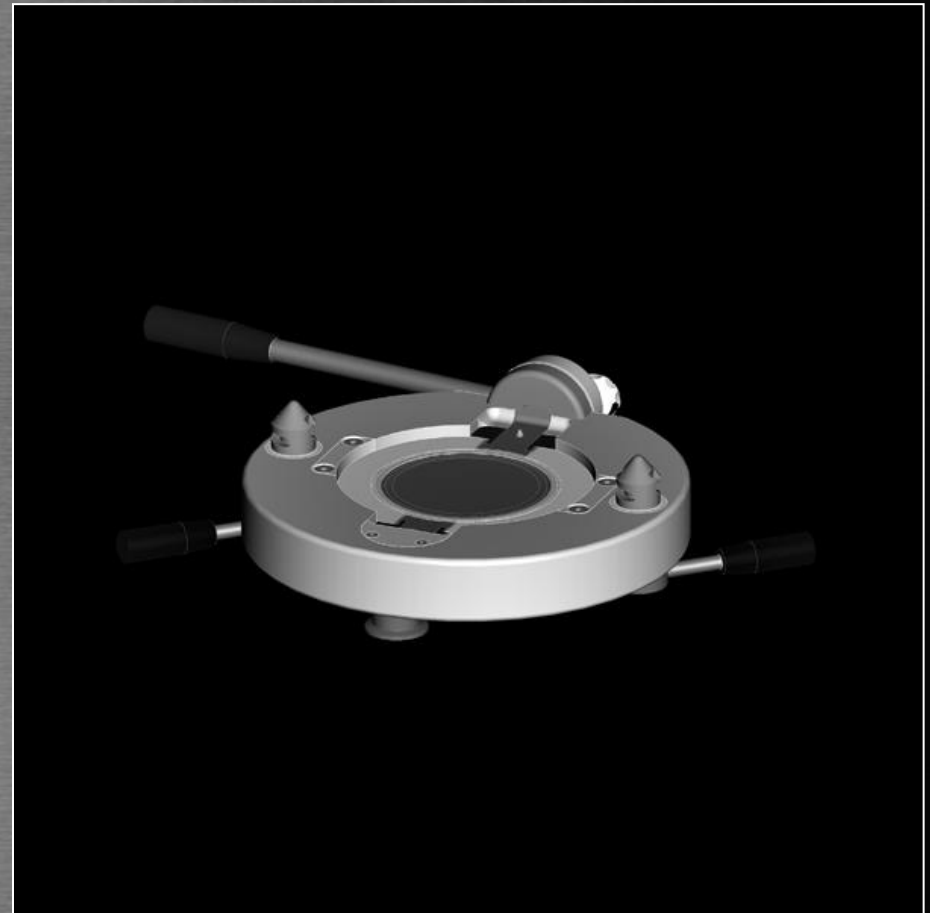
ONE VALVE - ONE SYSTEM - *ASBV*

- ▶ *ASBV*
active valve manual
operation, extension
drive shaft, optional
tri-clamp.



ONE VALVE - ONE SYSTEM - *ASBV*

- ▶ *ASBV*
active valve manual
operation, active flange
suction port, optional
long tri-clamp



ONE VALVE - ONE SYSTEM - *ASBV*

- ▶ *ASBV active valve
manual operation, active
flange suction port, and
flange.*

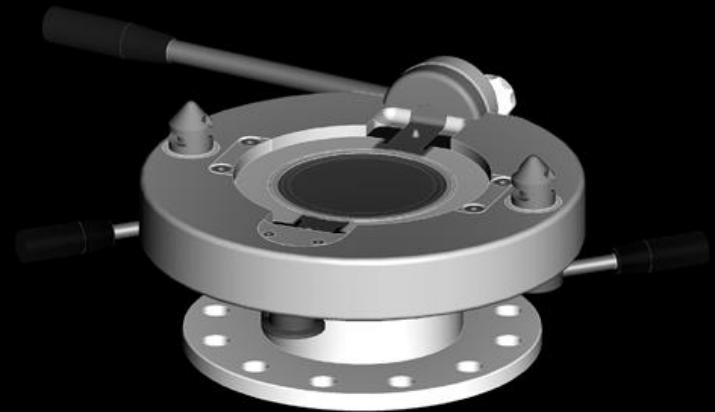
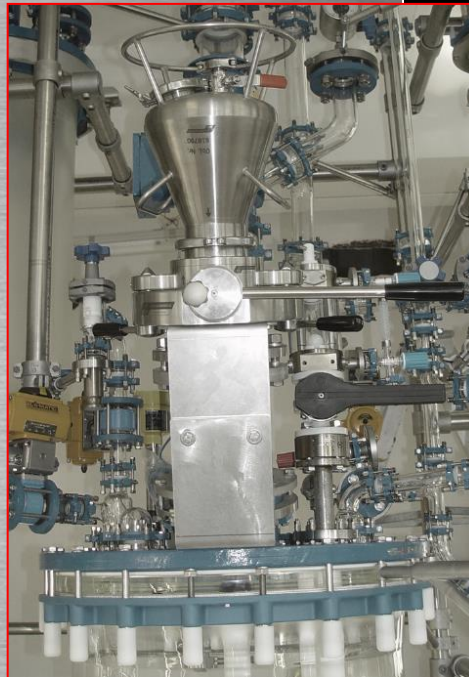
e.g. reactor

filling:

DN100 PN6

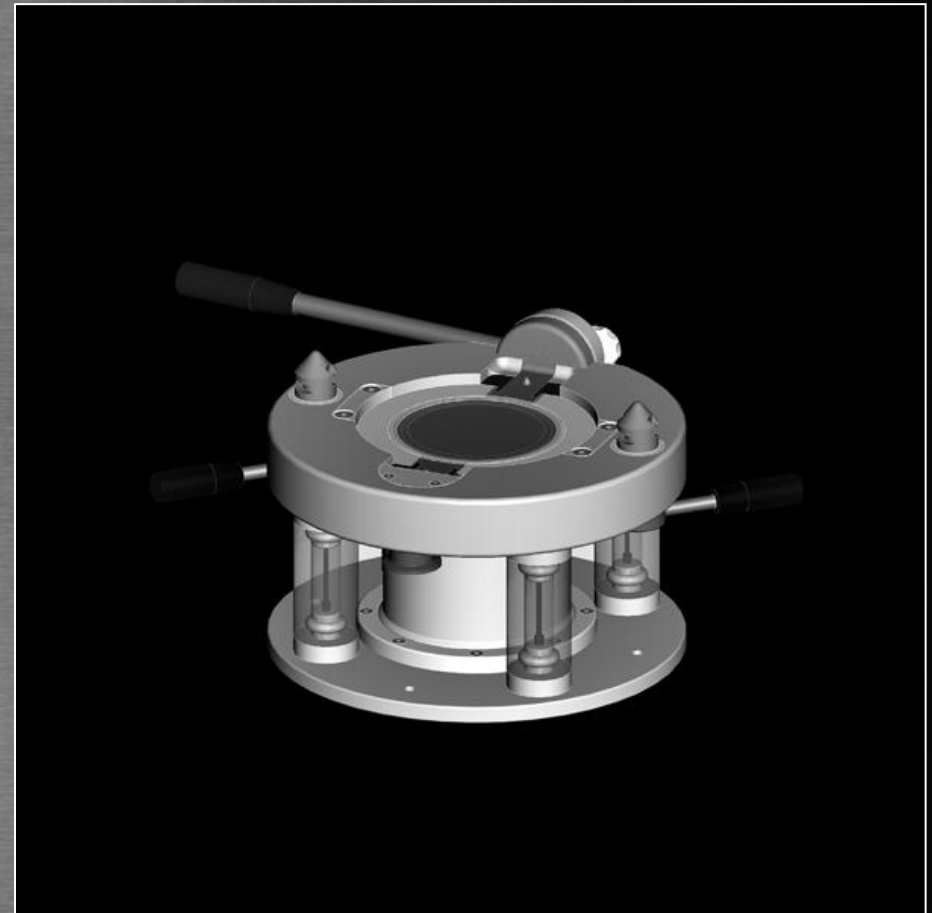
pressure

application



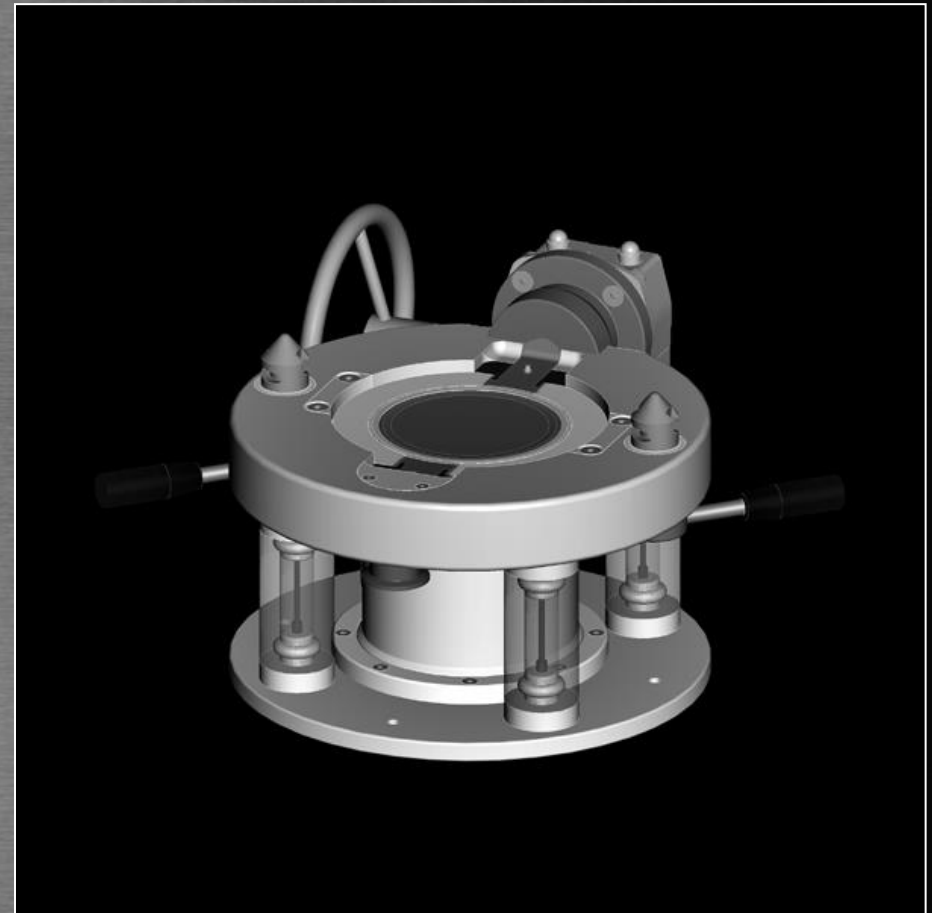
ONE VALVE - ONE SYSTEM - **ASBV**

- ▶ **ASBV**
active valve manual operation, active flange suction port, flexible eladur device, bellow with DIN / ANSI flanges



ONE VALVE - ONE SYSTEM - *ASBV*

- ▶ *ASBV*
active valve manual operation for locking, hand wheel gear box, active flange suction port, flexible eladur device, bellow with flanges, base plate



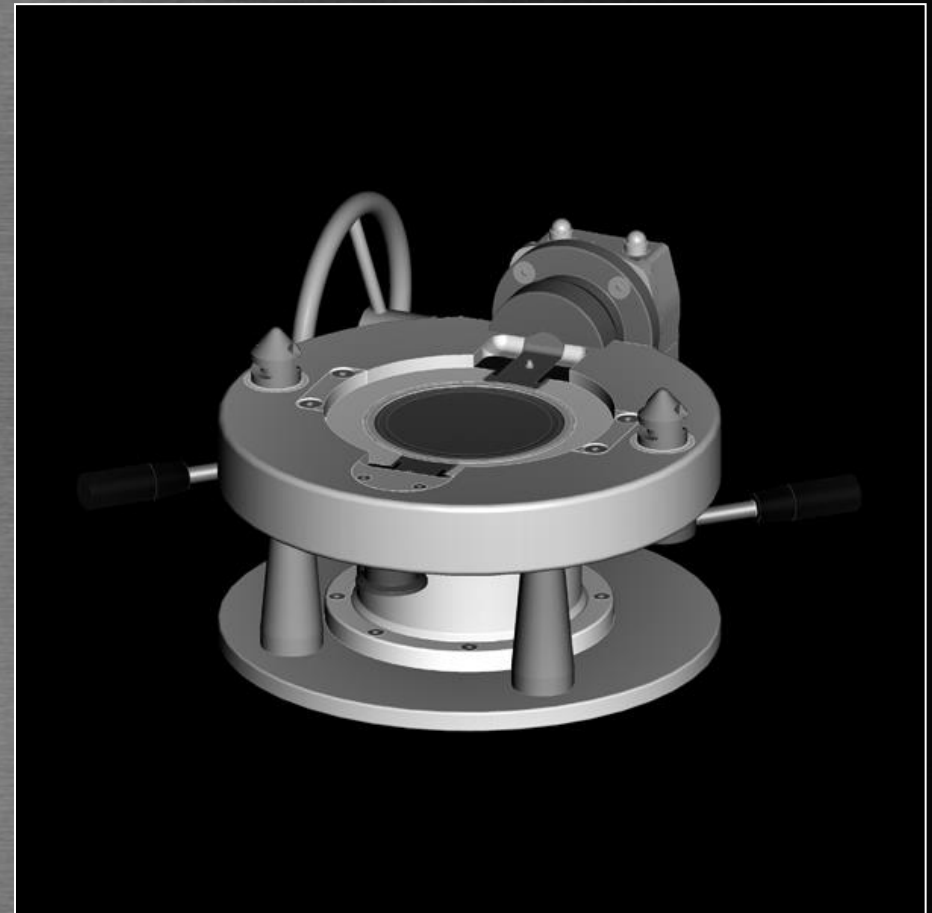
ONE VALVE - ONE SYSTEM - *ASBV*

- ▶ *ASBV*
active valve manual operation for locking, hand wheel gear box, active flange suction port, flexible eladur device, bellow with flanges, tri-clamp



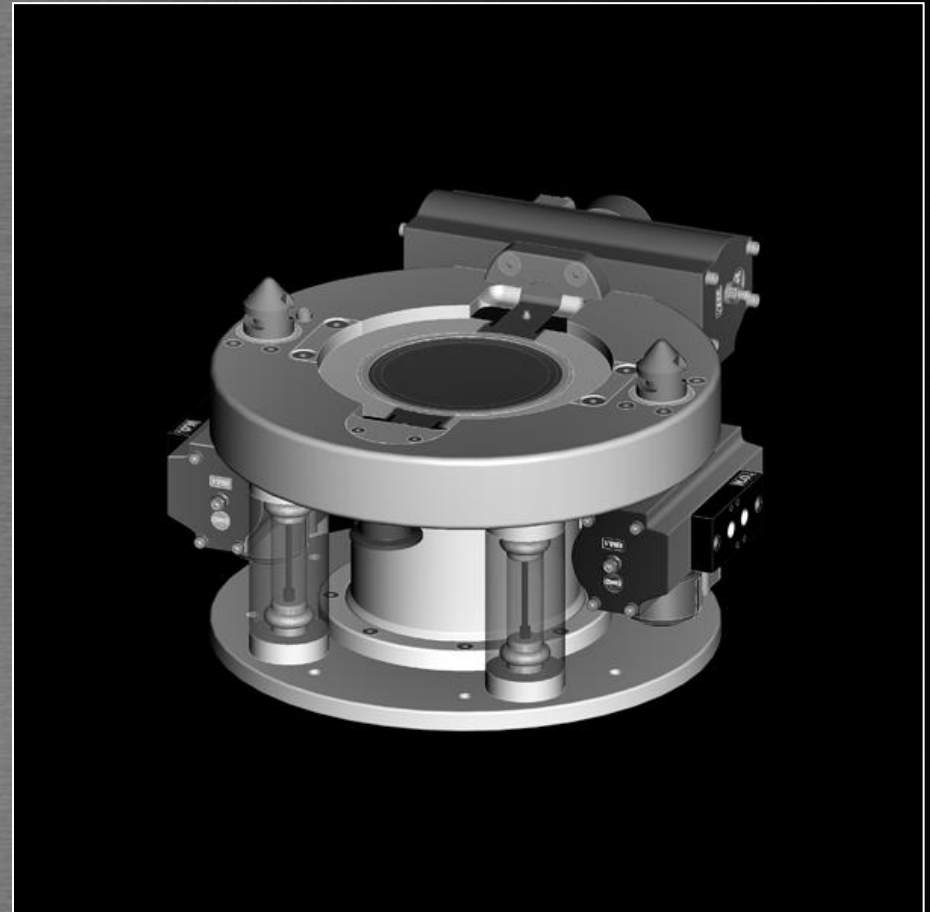
ONE VALVE - ONE SYSTEM - *ASBV*

- ▶ *ASBV*
active valve manual
operation for locking,
hand wheel gear box,
active flange suction
port, manual stroke,
bellow with flanges,
base plate



ONE VALVE - ONE SYSTEM - *ASBV*

- ▶ *ASBV active valve
automatic, pneumatic
actuators, active flange
suction port, flexible
eladur device, bellow
with flanges, base plate*



ONE VALVE - ONE SYSTEM - *ASBV*

- ▶ *ASBV active valve automatic, pneumatic actuators, active flange suction port, flexible eladur device, bellow with flanges, base plate, vibration unit*



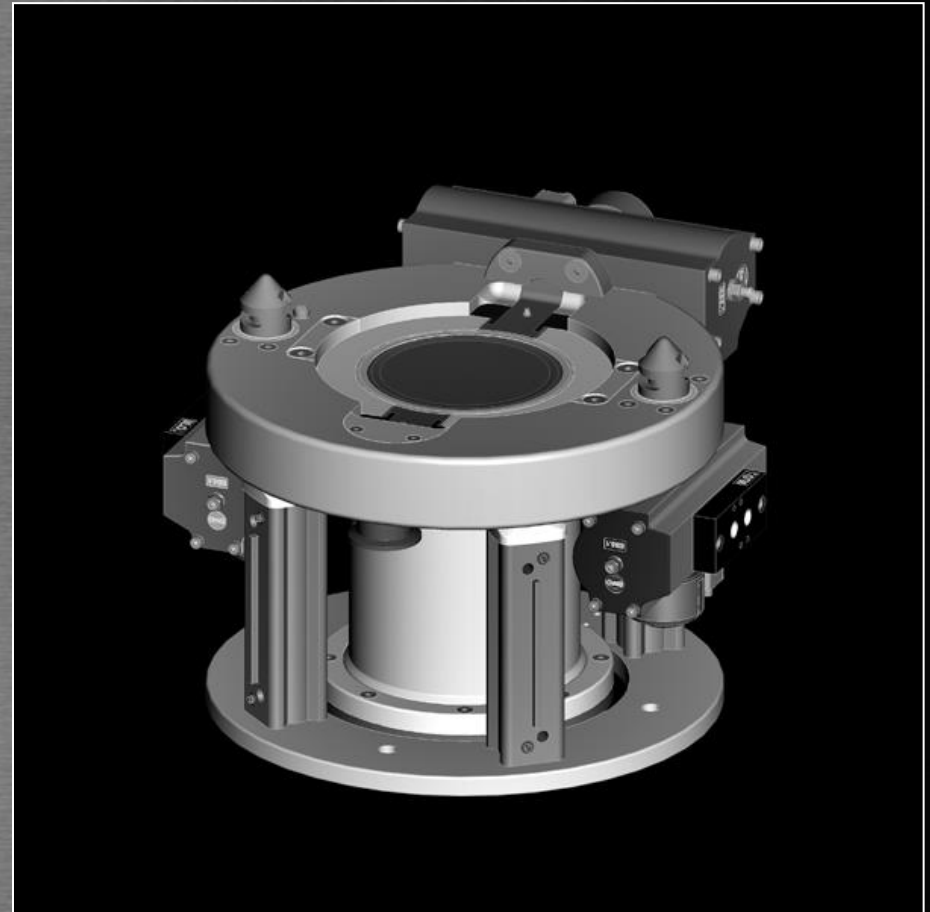
ONE VALVE - ONE SYSTEM - *ASBV*

- ▶ *ASBV active valve automatic, pneumatic actuators, active flange suction port, exterior flexible eladur device, bellow with flanges.*

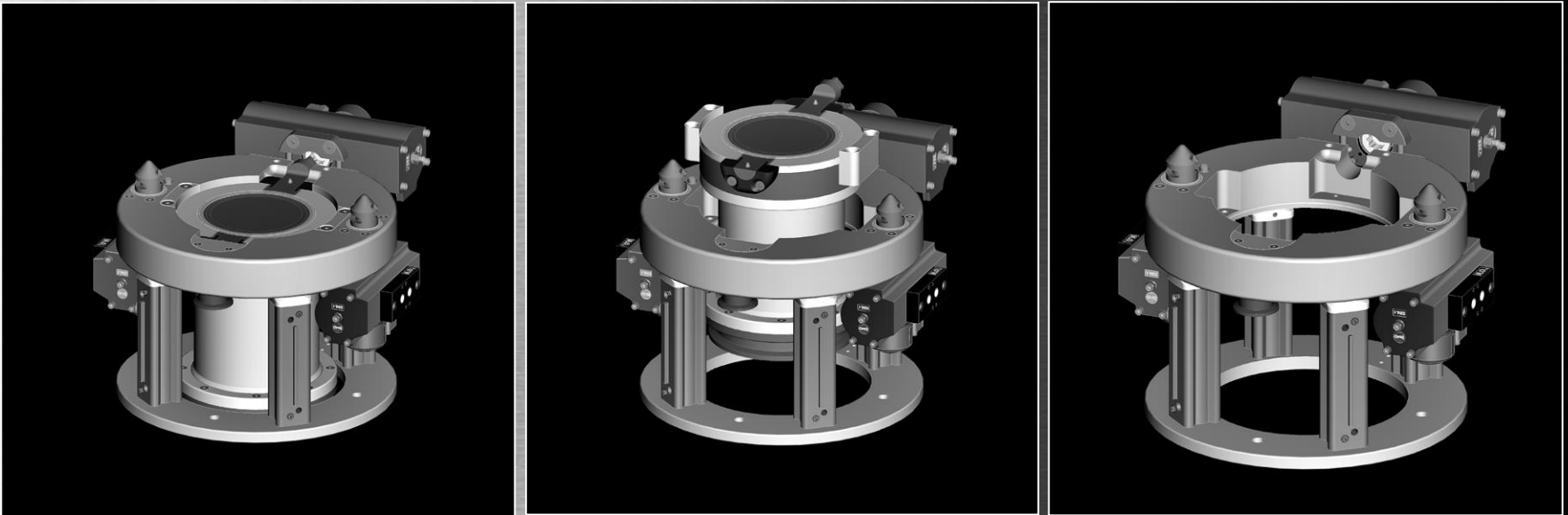


ONE VALVE - ONE SYSTEM - **ASBV**

- ▶ **ASBV**
*active valve automatic,
pneumatic actuators,
active flange suction
port, pneum. stroke
cylinders, bellow with
flanges, base plate*



ONE VALVE - ONE SYSTEM - *ASBV*



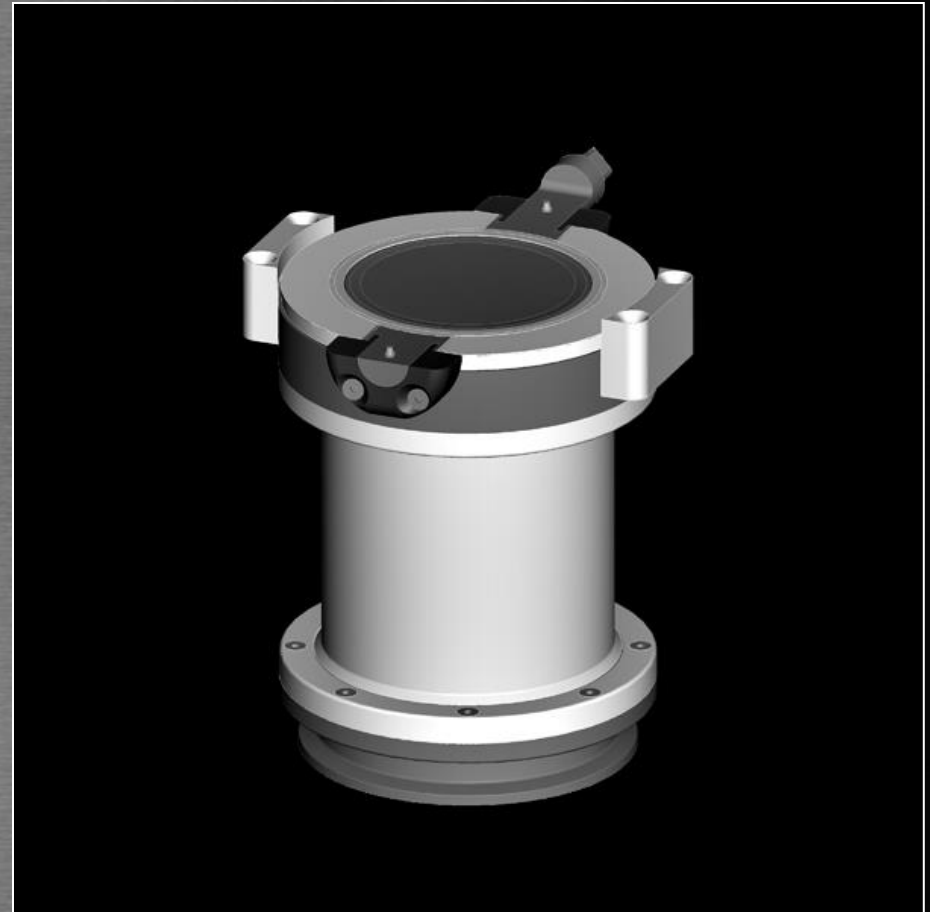
- ▶ ***ASBV feature: removable product contact parts***
 - 1) *unbolt 2 screws → pull main actuator backwards*
 - 2) *unbolt 4 screws → remove product contact part easily*
 - 3) *Insert a new or cleaned product contact part*

ONE VALVE - ONE SYSTEM - *ASBV*

- ▶ *ASBV removable active product contact parts.
approx. 10-20kg.*

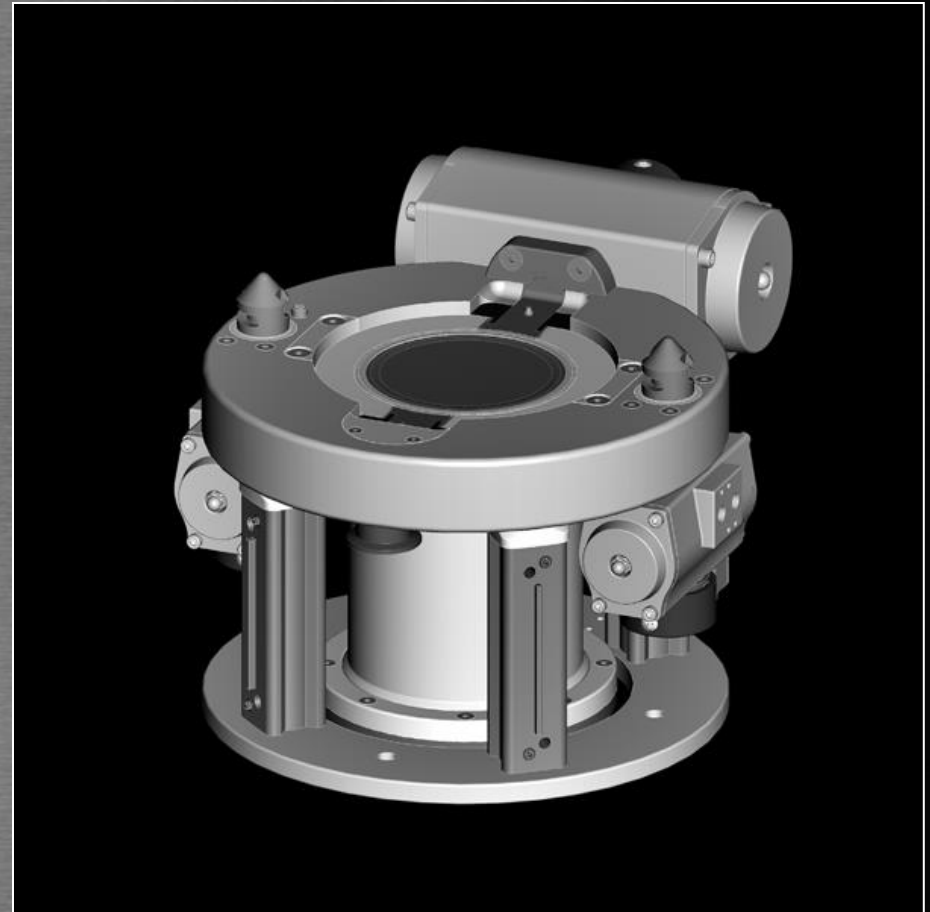
*The only parts for
cleaning! With an
additional unit on site:*

- *very short shutdown
period*
- *enormous cost
saving*



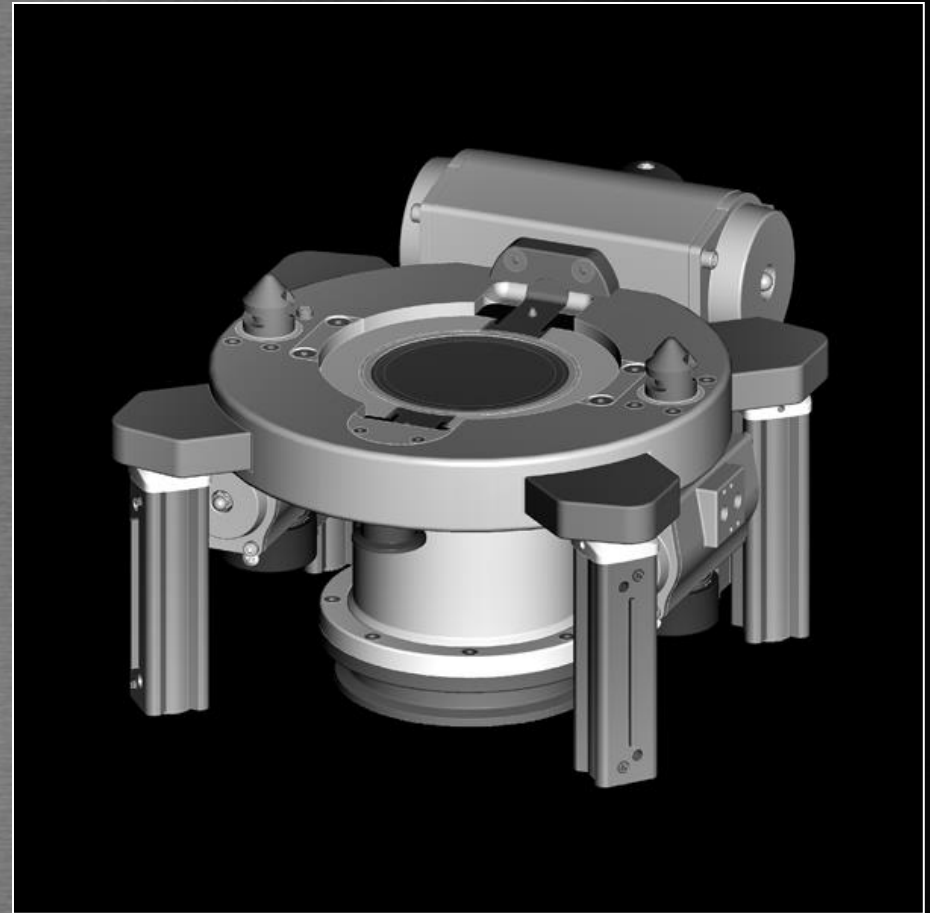
ONE VALVE - ONE SYSTEM - *ASBV*

- ▶ *ASBV active valve*
automatic, pneumatic
stainless steel
actuators, active flange
suction port, pneumatic
stroke cylinders, bellow
with flanges and base
plate

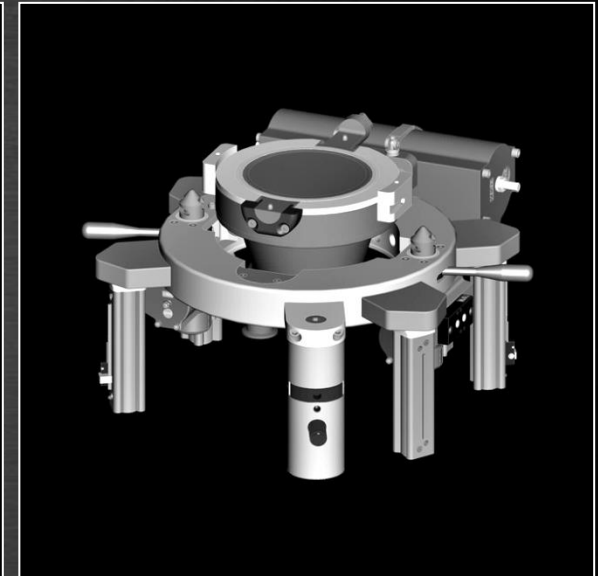
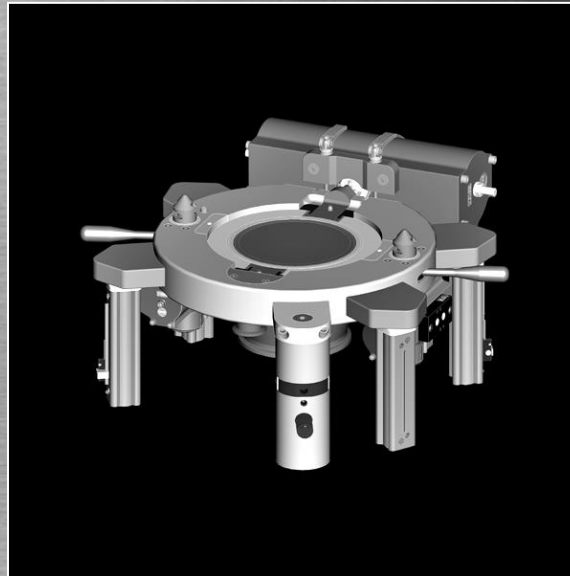


ONE VALVE - ONE SYSTEM - *ASBV*

- ▶ *ASBV active valve*
automatic, pneumatic
stainless steel
actuators, active flange
suction port, exterieur
pneum. stroke
cylinders, bellow with
flanges



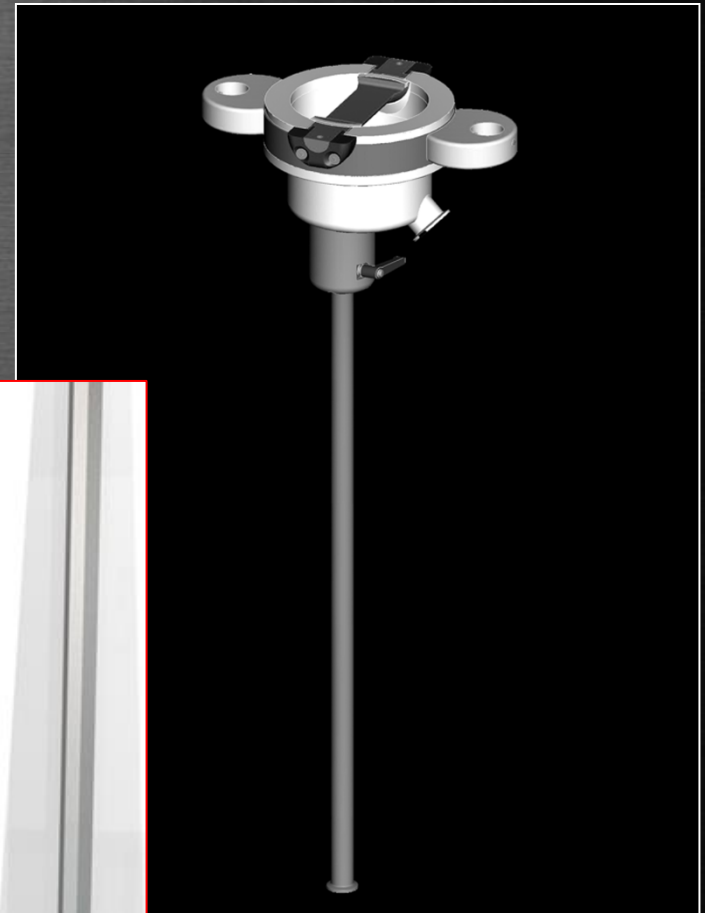
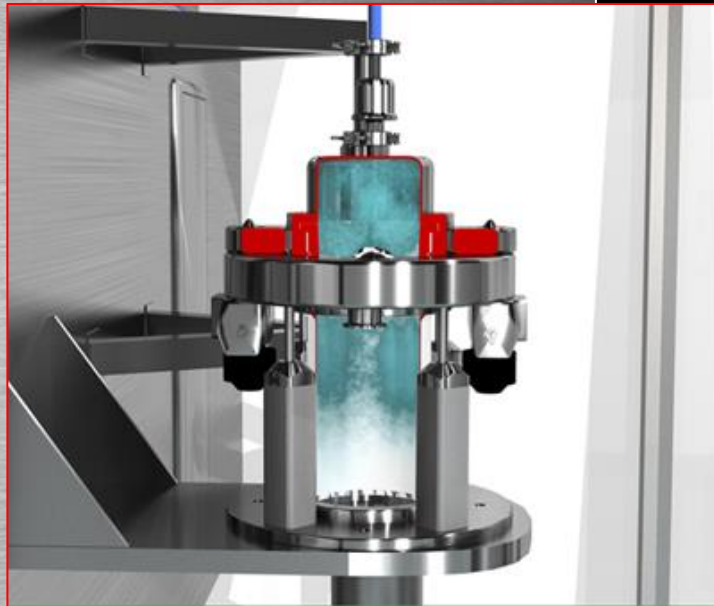
ONE VALVE - ONE SYSTEM - *ASBV*



- ▶ *Disassembling of product contact parts without tools due to manual operated release*

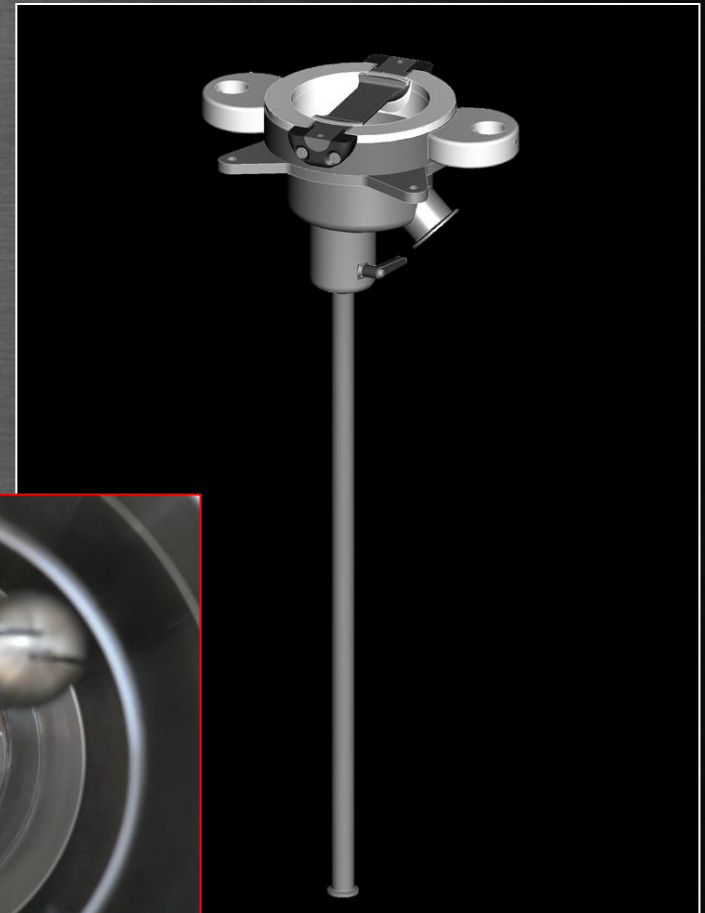
ONE VALVE - ONE SYSTEM - *ASBV*

- ▶ *ASBV passive wash valve
(to clean the active)
with half shaft, CIP unit
with side outlet,
movable
lance and
rotating
spray
nozzle.*



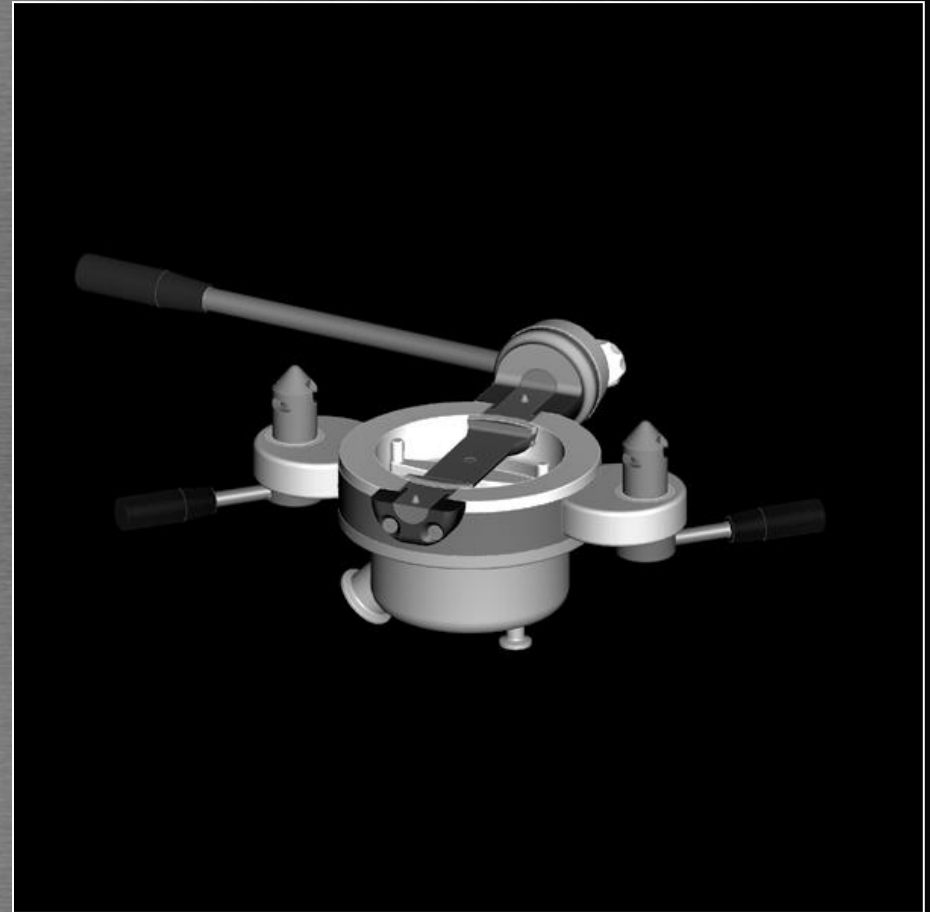
ONE VALVE - ONE SYSTEM - *ASBV*

- ▶ *ASBV passive wash valve
(to clean the active)
with half shaft, CIP unit
star flange with side outlet,
movable lance and rotating
spray nozzle*



ONE VALVE - ONE SYSTEM - *ASBV*

- ▶ *ASBV active wash valve (to clean the passive) manual operation, half shaft, CIP unit with side outlet and stationary spray nozzle*



ONE VALVE - ONE SYSTEM - *ASBV*

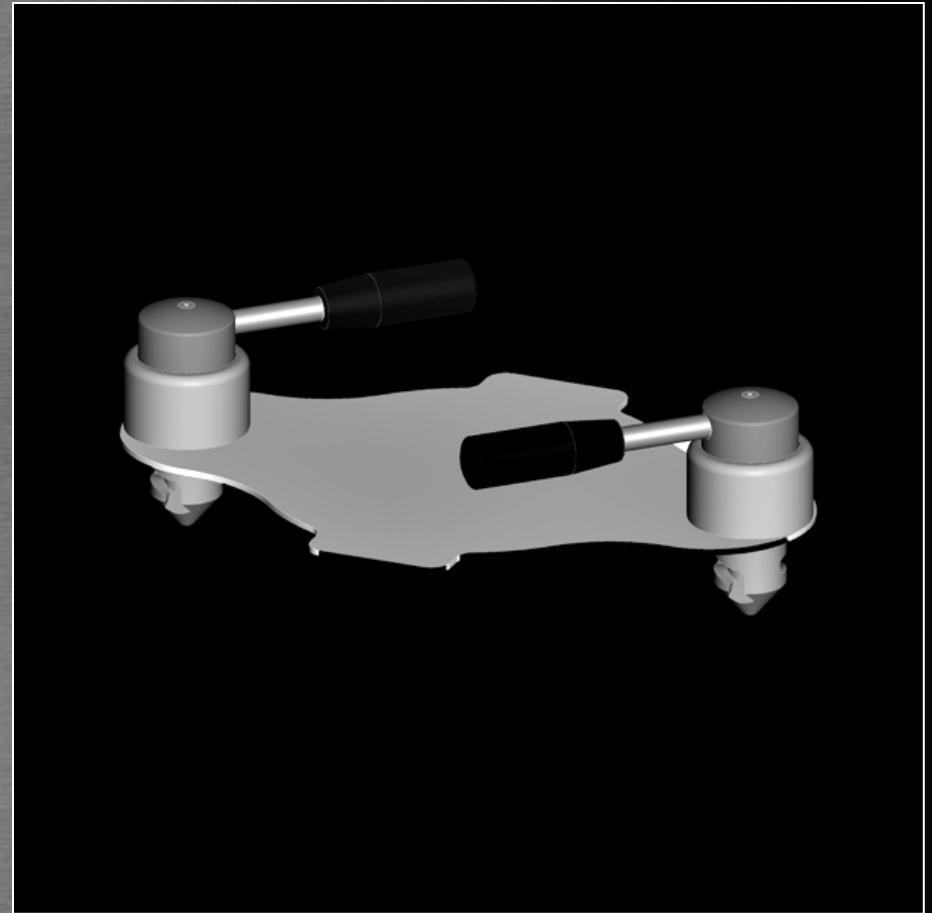
- ▶ *ASBV active wash valve (clean the passive) half shaft, automatic operation, exterior flexible eladur device, CIP unit with side outlet, movable lance and rotating spray nozzle.*

e.g. combination with ACON



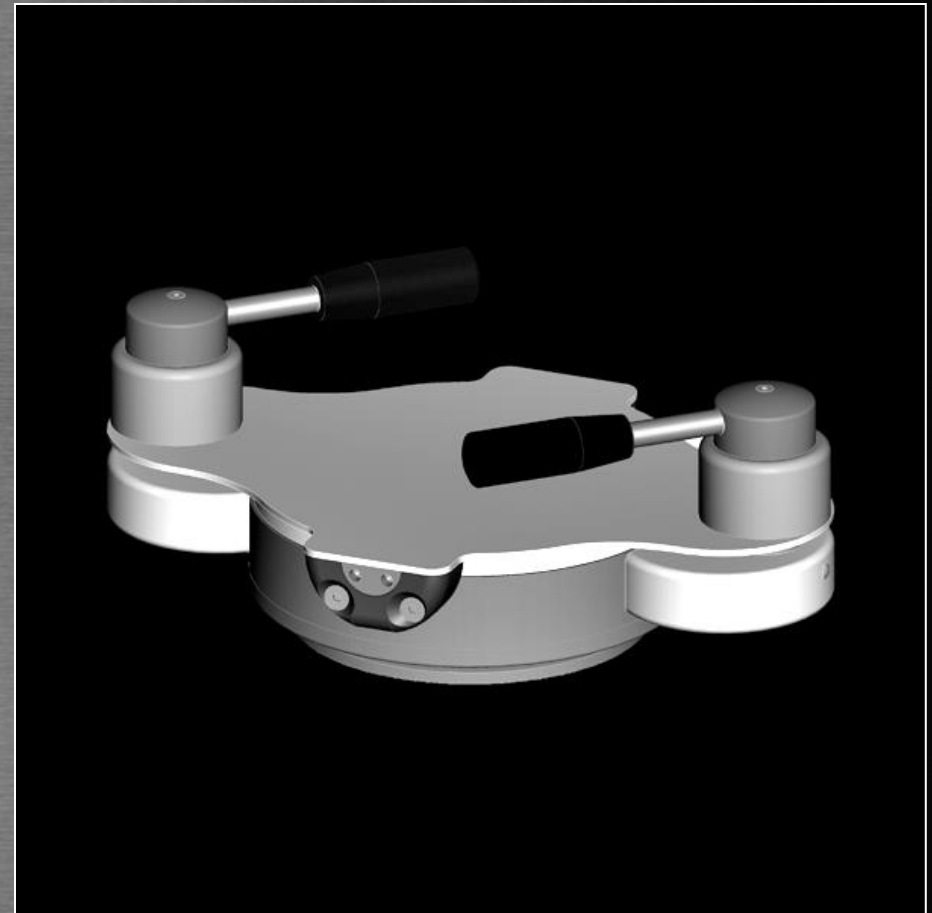
ONE VALVE - ONE SYSTEM - *ASBV*

- ▶ *ASBV passive lid*



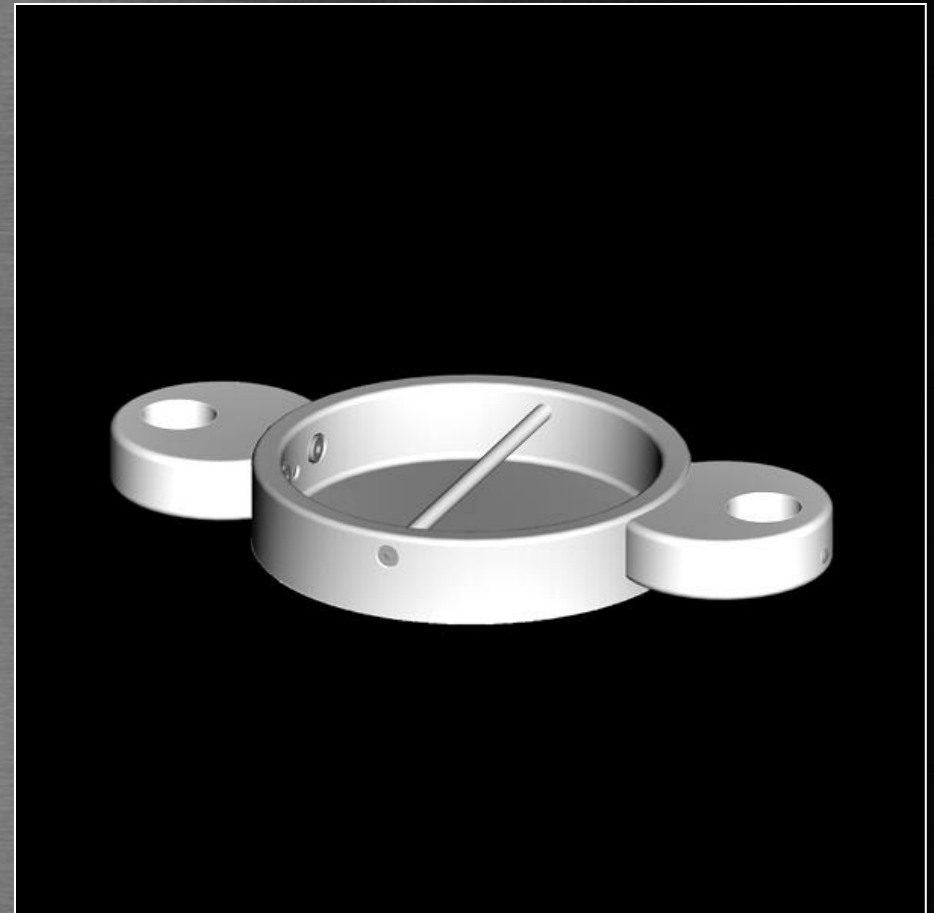
ONE VALVE - ONE SYSTEM - *ASBV*

- ▶ *ASBV passive lid with passive valve*



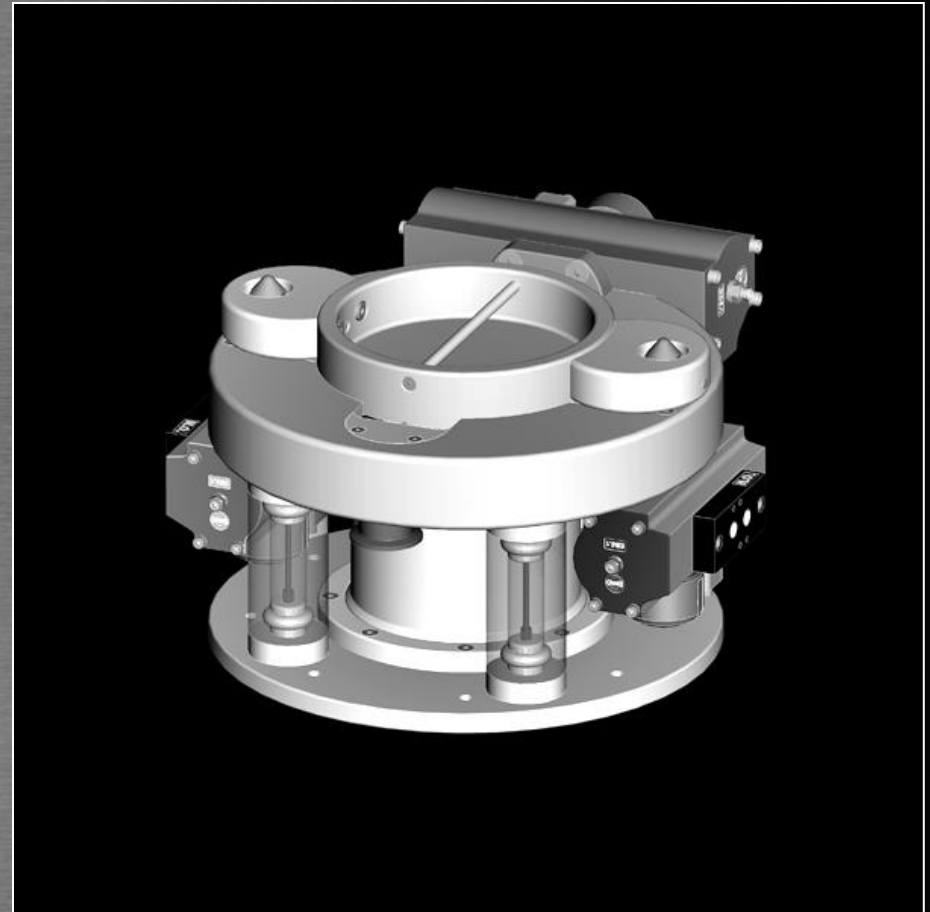
ONE VALVE - ONE SYSTEM - *ASBV*

- ▶ *ASBV active lid*

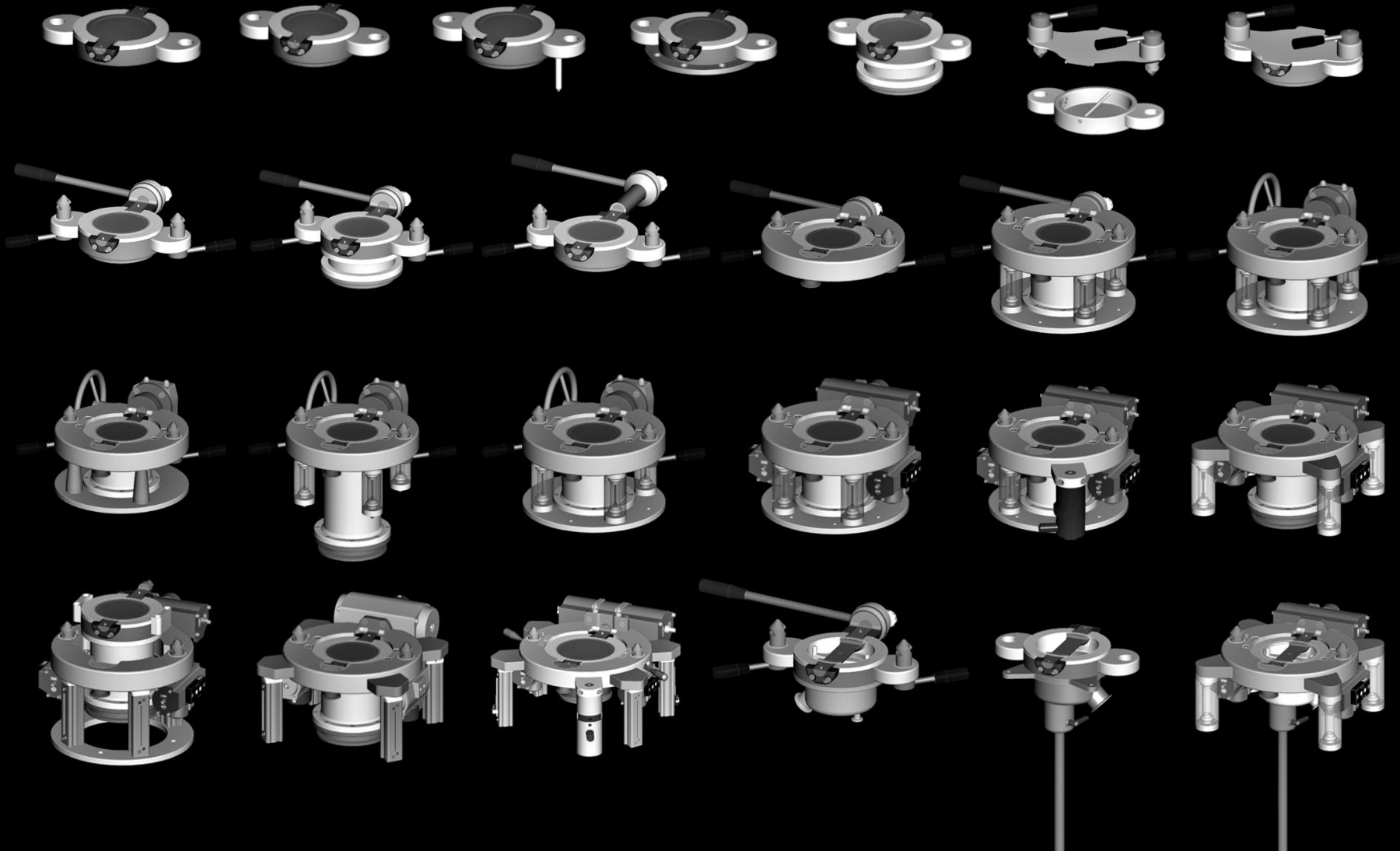


ONE VALVE - ONE SYSTEM - *ASBV*

- ▶ *ASBV active lid.*
e.g. active valve with
automated operation
and lid



ONE VALVE – *FOR ALL APPLICATIONS*





Our Philosophy: Perfection in the smallest detail



Andocksysteme G. Untch GmbH
Schweighofstr. 3 - 79410 Badenweiler
Tel. +49 7632 82 3 82 0
Fax +49 7632 82 3 82 29
info@andocksysteme.com
www.andocksysteme.com